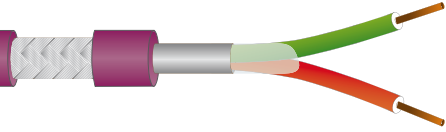


# UNIDRALL® BUS 1000F

Cavo PROFIBUS per posa fissa  
PROFIBUS cable for fixed installation

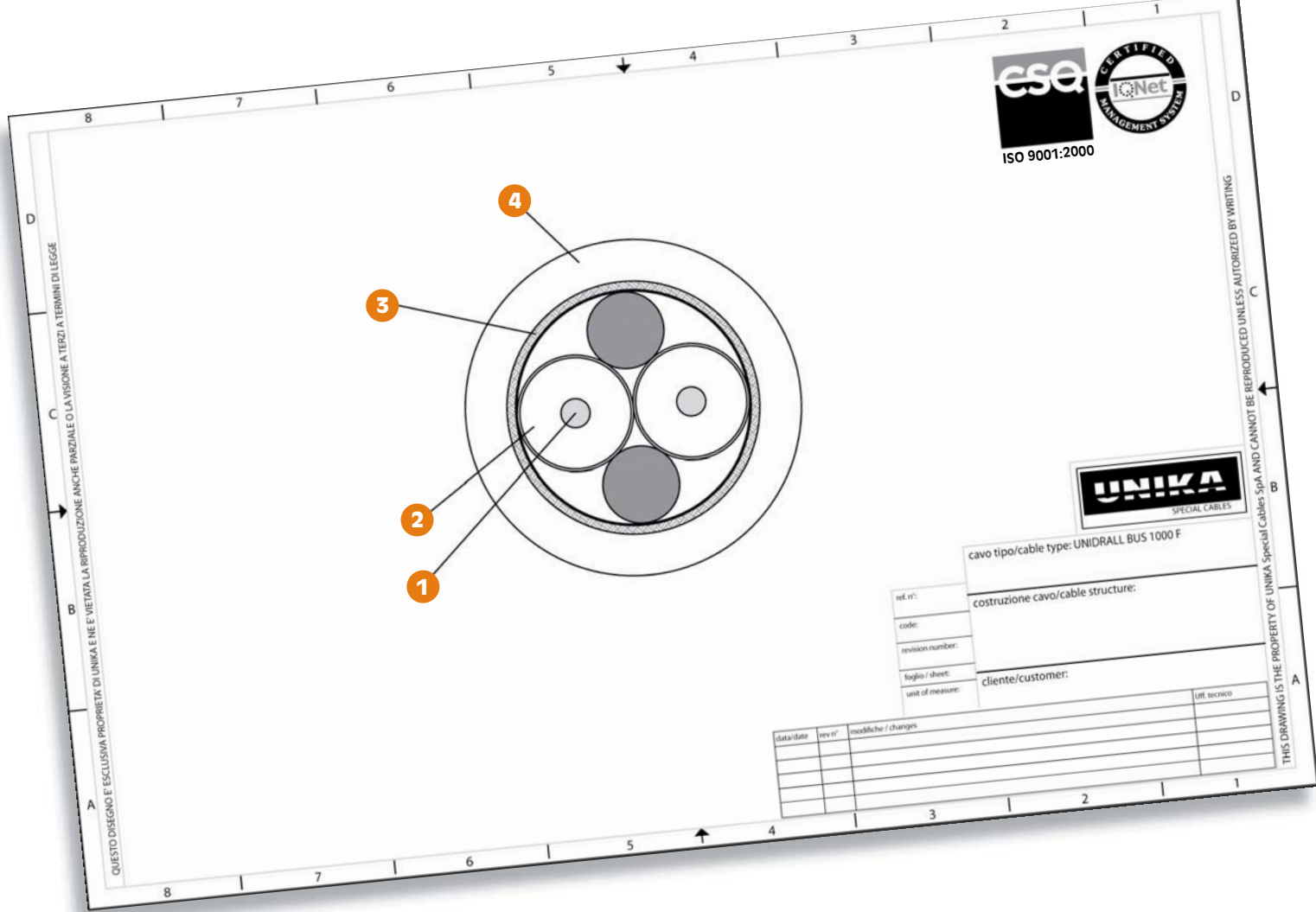
UNIKA UNIDRALL BUS 1000 F cAUs AWM style 21179 80°C 1000V FT-1 CE



	Dati tecnici	Technical data
<b>Conduttore</b> <b>Conductor</b>	1 Rame rosso secondo CEI EN 60228 (CEI 20-29) classe 1	Bare copper complying with CEI EN 60228 (CEI 20-29) class 1
<b>Isolamento ed identificazione anime</b> <b>Insulation and core identification</b>	2 PE espanso con skin in HDPE. Anime colorate verde e rosso	Foam PE with HDPE skin. Core colours: green and red
<b>Schermatura totale</b> <b>Overall shielding</b>	3 Nastro di alluminio/poliestere e treccia di fili di rame stagnato avente copertura maggiore 60%.	Aluminium/polyester tape with tinned copper wire braid having coverage above 60%.
<b>Guaina</b> <b>Jacket</b>	4 PVC classe 43 secondo UL 1581. Colore viola RAL 4001	PVC class 43 according to UL1581. Colour violet RAL 4001
<b>Tensione di lavoro</b> <b>Operating voltage</b>	30 V	30 V
<b>Tensione di prova</b> <b>Test voltage</b>	1000 V	1000 V
<b>Resistenza di isolamento</b> <b>Insulation resistance</b>	> 200 MΩ·km	> 200 MΩ·km
<b>Temperatura di lavoro</b> <b>Operating temperature</b>	Posa fissa -30 ÷ 80 °C	Fixed installation -30 ÷ 80 °C
	Posa flessibile -5 ÷ 80 °C	Flexible installation -5 ÷ 80 °C
<b>Raggio minimo di curvatura</b> <b>Minimum bending radius</b>	Posa fissa 6 x diametro esterno	Fixed installation 6 x outer diameter
	Posa flessibile 12 x diametro esterno	Flexible installation 12 x outer diameter
<b>Comportamento al fuoco</b> <b>Fire behaviour</b>	Prova di non propagazione fiamma UL 758 e prova FT-1 CSA C.22.2 n°210	Cable flame test per UL 758 and FT-1 test per CSA C.22.2 n°210
<b>Emissione gas alogenidrici</b> <b>Halogen gas emission</b>	≤ 18% IEC 60754, CEI EN 50267-2	≤ 18% IEC 60754, CEI EN 50267-2
<b>Resistenza agli oli industriali</b> <b>Industrial oil resistance</b>	IEC CEI EN 60811-2-1	IEC CEI EN 60811-2-1
<b>Assorbimento d'acqua</b> <b>Water absorption</b>	IEC CEI EN 60811-1-3	IEC CEI EN 60811-1-3
<b>Resistenza elettrica</b> <b>Electrical resistance</b>	≤ 57,5 Ω/km	≤ 57,5 Ω/km
<b>Capacità mutua a 1 kHz</b> <b>Mutual capacitance at 1 kHz</b>	≤ 30 pF/m	≤ 30 pF/m

Approvato DESINA.  
Approvato UL/CSA:  
80°C 1000V style 21179

DESINA Approved.  
UL and CSA approvals:  
80°C 1000V style 21179



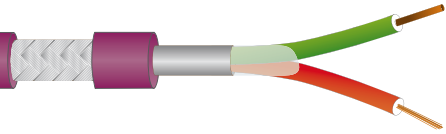
codice code	formazione assembly	diametro esterno outer diameter [mm]	massa Cu Cu mass [Kg/km]	massa cavo cable mass [Kg/km]
B1123	1x2x0,64	Max 8,0	25	73,7

	Dati tecnici		Technical data	
<b>Impedenza caratteristica</b> <b>Characteristic impedance</b>	150 ± 15 Ω		150 ± 15 Ω	
<b>Attenuazione</b> <b>Attenuation</b>	Frequenza [MHz] 0,25 0,625 1,25 3,125 16	Attenuazione massima [dB/km] 6 9 12 18 40	Frequency [MHz] 0,25 0,625 1,25 3,125 16	Maximum attenuation [dB/km] 6 9 12 18 40
<b>Sbilancio capacitivo verso terra</b> <b>Capacitance earth unbalance</b>	≤ 1500 pF/m		≤ 1500 pF/m	
<b>Massima lunghezza di trasmissione per tratta</b> <b>Maximum length for each segment</b>	Transmission rate [kbit/s] ≤ 93,75 ≤ 187,5 ≤ 500 ≤ 1500 ≤ 12000	Lunghezza [m] 1200 1000 400 200 100	Transmission rate [kbit/s] ≤ 93,75 ≤ 187,5 ≤ 500 ≤ 1500 ≤ 12000	Length [m] 1200 1000 400 200 100

# UNIDRALL® BUS 1000

Cavo PROFIBUS per posa flessibile  
PROFIBUS cable for flexible installation

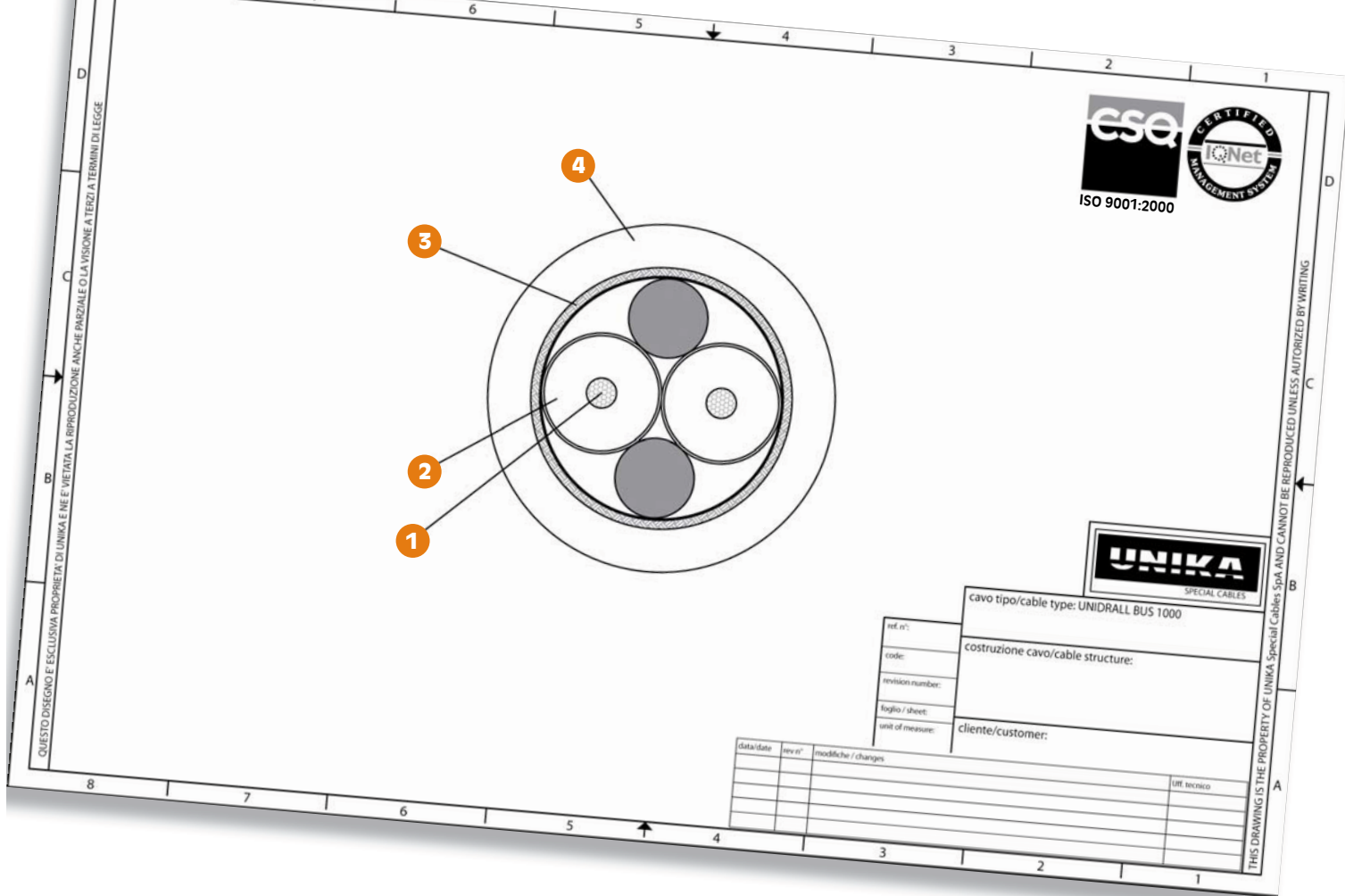
UNIKA UNIDRALL BUS 1000 cULus AWM style 21179 80°C 1000V FT-1 CE



	Dati tecnici	Technical data
<b>Conduttore</b> <b>Conductor</b>	1 Rame rosso secondo CEI EN 60228 (CEI 20-29) classe 5	Bare copper complying with CEI EN 60228 (CEI 20-29) class 5
<b>Isolamento ed identificazione anime</b> <b>Insulation and core identification</b>	2 PE espanso con skin in HDPE. Anime colorate verde e rosso	Foam PE with HDPE skin. Core colours: green and red
<b>Schermatura totale</b> <b>Overall shielding</b>	3 Nastro di alluminio/poliestere e treccia di fili di rame stagnato avente copertura maggiore 60%.	Aluminium/polyester tape with tinned copper wire braid having coverage above 60%.
<b>Guaina</b> <b>Jacket</b>	4 PVC classe 43 secondo UL 1581. Colore viola RAL 4001	PVC class 43 according to UL1581. Colour violet RAL 4001
<b>Tensione di lavoro</b> <b>Operating voltage</b>	30 V	30 V
<b>Tensione di prova</b> <b>Test voltage</b>	1000 V	1000 V
<b>Resistenza di isolamento</b> <b>Insulation resistance</b>	> 200 MΩ·km	> 200 MΩ·km
<b>Temperatura di lavoro</b> <b>Operating temperature</b>	Posa fissa -30 ÷ 80 °C	Fixed installation -30 ÷ 80 °C
	Posa flessibile -5 ÷ 80 °C	Flexible installation -5 ÷ 80 °C
<b>Raggio minimo di curvatura</b> <b>Minimum bending radius</b>	Posa fissa 5 x diametro esterno	Fixed installation 5 x outer diameter
	Posa flessibile 10 x diametro esterno	Flexible installation 10 x outer diameter
<b>Comportamento al fuoco</b> <b>Fire behaviour</b>	Prova di non propagazione fiamma UL 758 e prova FT-1 CSA C.22.2 n°210	Cable flame test per UL 758 and FT-1 test per CSA C.22.2 n°210
<b>Emissione gas alogenidrici</b> <b>Halogen gas emission</b>	≤ 18% IEC 60754, CEI EN 50267-2	≤ 18% IEC 60754, CEI EN 50267-2
<b>Resistenza agli oli industriali</b> <b>Industrial oil resistance</b>	IEC CEI EN 60811-2-1	IEC CEI EN 60811-2-1
<b>Assorbimento d'acqua</b> <b>Water absorption</b>	IEC CEI EN 60811-1-3	IEC CEI EN 60811-1-3
<b>Resistenza elettrica</b> <b>Electrical resistance</b>	≤ 76 Ω/km	≤ 76 Ω/km
<b>Capacità mutua a 1 kHz</b> <b>Mutual capacitance at 1 kHz</b>	≤ 30 pF/m	≤ 30 pF/m

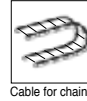
Approvato DESINA.  
Approvato UL/CSA:  
80°C 1000V style 21179

DESINA Approved.  
UL and CSA approvals:  
80°C 1000V style 21179



codice code	formazione assembly	diametro esterno outer diameter [mm]	massa Cu Cu mass [Kg/km]	massa cavo cable mass [Kg/km]
<b>B1223</b>	1x2x0,64	Max 8,0	25	79,0

	Dati tecnici		Technical data	
<b>Impedenza caratteristica</b> <b>Characteristic impedance</b>	150 ± 15 Ω		150 ± 15 Ω	
<b>Attenuazione</b> <b>Attenuation</b>	Frequenza [MHz] 0,25 0,625 1,25 3,125 16	Attenuazione massima [dB/km] 6 9 12 18 40	Frequency [MHz] 0,25 0,625 1,25 3,125 16	Maximum attenuation [dB/km] 6 9 14 23 47
<b>Sbilancio capacitivo verso terra</b> <b>Capacitance earth unbalance</b>	≤ 1500 pF/m		≤ 1500 pF/m	
<b>Massima lunghezza di trasmissione per tratta</b> <b>Maximum length for each segment</b>	Transmission rate [kbit/s] ≤ 93,75 ≤ 187,5 ≤ 500 ≤ 1500 ≤ 12000	Lunghezza [m] 1200 1000 400 200 100	Transmission rate [kbit/s] ≤ 93,75 ≤ 187,5 ≤ 500 ≤ 1500 ≤ 12000	Length [m] 1200 1000 400 200 100



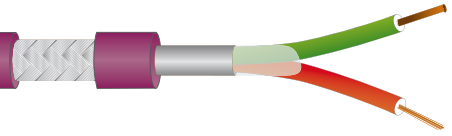
Cable for chain



# UNIDRALL® BUS 1000M

Cavi PROFIBUS per posa mobile in catena con alte prestazioni  
PROFIBUS cables for dynamic installation into chain with high performance

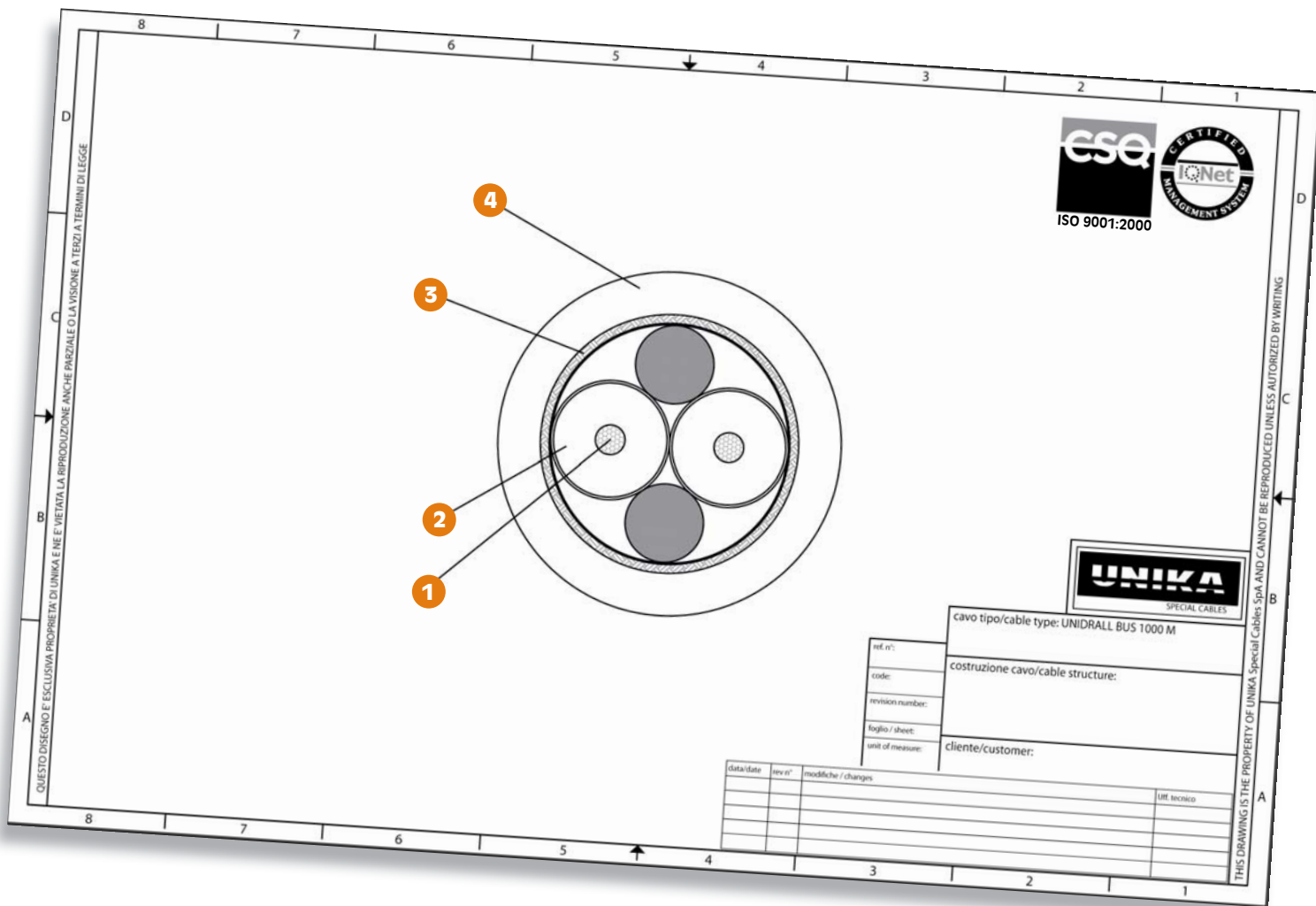
UNIKA UNIDRALL BUS 1000M cAUs AWM style 21576 80°C 1000V FT-2 CE



	Dati tecnici	Technical data
<b>Conduttore</b> <b>Conductor</b>	<b>1</b> Rame rosso secondo CEI EN 60228 (CEI 20-29) classe 6	Bare copper complying with CEI EN 60228 (CEI 20-29) class 6
<b>Isolamento ed identificazione anime</b> <b>Insulation and core identification</b>	<b>2</b> PE espanso con skin in HDPE. Anime colorate verde e rosso	Foam PE with HDPE skin. Core colours: green and red
<b>Schermatura totale</b> <b>Overall shielding</b>	<b>3</b> Treccia di fili di rame stagnato avente copertura maggiore 85%.	Tinned copper wire braid having coverage above 85%.
<b>Guaina</b> <b>Jacket</b>	<b>4</b> PUR secondo UL 1581 and CSA C22.2 n°210. Colore viola RAL 4001	PUR according to UL1581 and C22.2 n°210. Colour violet RAL 4001
<b>Tensione di lavoro</b> <b>Operating voltage</b>	30 V	30 V
<b>Tensione di prova</b> <b>Test voltage</b>	1000 V	1000 V
<b>Resistenza di isolamento</b> <b>Insulation resistance</b>	> 200 MΩ·km	> 200 MΩ·km
<b>Temperatura di lavoro</b> <b>Operating temperature</b>	Posa fissa -30 ÷ 80 °C  Posa flessibile -30 ÷ 80 °C	Fixed installation -30 ÷ 80 °C  Flexible installation -30 ÷ 80 °C
<b>Velocità [m/min]</b> <b>Speed</b>	300	300
<b>Accelerazione/ decelerazione [m/s²]</b> <b>Acceleration/ deceleration [m/s²]</b>	40	40
<b>Raggio minimo di curvatura</b> <b>Minimum bending radius</b>	Posa fissa 5 x diametro esterno  Posa flessibile 10 x diametro esterno	Fixed installation 5 x outer diameter  Flexible installation 10 x outer diameter
<b>Comportamento al fuoco</b> <b>Fire behaviour</b>	Prova di non propagazione fiamma UL 758 e prova FT-2 CSA C.22.2 n°210, CEI EN 60332-1	Cable flame test per UL 758 and FT-2 test per CSA C.22.2 n°210, CEI EN 60332-1
<b>Emissione gas alogenidrici</b> <b>Halogen gas emission</b>	≤ 0,5% IEC 60754, CEI EN 50267-2	≤ 0,5% IEC 60754, CEI EN 50267-2
<b>Resistenza agli oli industriali</b> <b>Industrial oil resistance</b>	<b>OIL 80° C</b> UL 758 table 15.1, HD 22.10	<b>OIL 80° C</b> UL 758 table 15.1, HD 22.10
<b>Assorbimento d'acqua</b> <b>Water absorption</b>	IEC CEI EN 60811-1-3	IEC CEI EN 60811-1-3
<b>Resistenza elettrica</b> <b>Electrical resistance</b>	≤ 57,5 Ω/km	≤ 76 Ω/km

Approvato DESINA.  
Approvato UL/CSA:  
80°C 1000V style 21576

DESINA Approved.  
UL and CSA approvals:  
80°C 1000V style 21576



codice code	formazione assembly	diametro esterno outer diameter [mm]	massa Cu mass [Kg/km]	massa cavo cable mass [Kg/km]
<b>B1423</b>	1x2x0,64	Max 8,0	37,0	96,5

Dati tecnici		Technical data																									
<b>Capacità mutua a 1 kHz</b> <b>Mutual capacitance at 1 kHz</b>	≤ 30 pF/m	≤ 30 pF/m																									
<b>Impedenza caratteristica</b> <b>Characteristic impedance</b>	150 ± 15 Ω	150 ± 15 Ω																									
<b>Attenuazione</b> <b>Attenuation</b>	<table border="1"> <thead> <tr> <th>Frequenza [MHz]</th> <th>Attenuazione massima [dB/km]</th> </tr> </thead> <tbody> <tr><td>0,25</td><td>6</td></tr> <tr><td>0,625</td><td>9</td></tr> <tr><td>1,25</td><td>14</td></tr> <tr><td>3,125</td><td>23</td></tr> <tr><td>16</td><td>47</td></tr> </tbody> </table>	Frequenza [MHz]	Attenuazione massima [dB/km]	0,25	6	0,625	9	1,25	14	3,125	23	16	47	<table border="1"> <thead> <tr> <th>Frequency [MHz]</th> <th>Maximum attenuation [dB/km]</th> </tr> </thead> <tbody> <tr><td>0,25</td><td>6</td></tr> <tr><td>0,625</td><td>9</td></tr> <tr><td>1,25</td><td>14</td></tr> <tr><td>3,125</td><td>23</td></tr> <tr><td>16</td><td>47</td></tr> </tbody> </table>	Frequency [MHz]	Maximum attenuation [dB/km]	0,25	6	0,625	9	1,25	14	3,125	23	16	47	
Frequenza [MHz]	Attenuazione massima [dB/km]																										
0,25	6																										
0,625	9																										
1,25	14																										
3,125	23																										
16	47																										
Frequency [MHz]	Maximum attenuation [dB/km]																										
0,25	6																										
0,625	9																										
1,25	14																										
3,125	23																										
16	47																										
<b>Sbilancio capacitivo verso terra</b> <b>Capacitance earth unbalance</b>	≤ 1500 pF/m	≤ 1500 pF/m																									
<b>Massima lunghezza di trasmissione per tratta</b> <b>Maximum length for each segment</b>	<table border="1"> <thead> <tr> <th>Transmission rate [kbit/s]</th> <th>Lunghezza [m]</th> </tr> </thead> <tbody> <tr><td>≤ 93,75</td><td>1200</td></tr> <tr><td>≤ 187,5</td><td>1000</td></tr> <tr><td>≤ 500</td><td>400</td></tr> <tr><td>≤ 1500</td><td>200</td></tr> <tr><td>≤ 12000</td><td>100</td></tr> </tbody> </table>	Transmission rate [kbit/s]	Lunghezza [m]	≤ 93,75	1200	≤ 187,5	1000	≤ 500	400	≤ 1500	200	≤ 12000	100	<table border="1"> <thead> <tr> <th>Transmission rate [kbit/s]</th> <th>Length [m]</th> </tr> </thead> <tbody> <tr><td>≤ 93,75</td><td>1200</td></tr> <tr><td>≤ 187,5</td><td>1000</td></tr> <tr><td>≤ 500</td><td>400</td></tr> <tr><td>≤ 1500</td><td>200</td></tr> <tr><td>≤ 12000</td><td>100</td></tr> </tbody> </table>	Transmission rate [kbit/s]	Length [m]	≤ 93,75	1200	≤ 187,5	1000	≤ 500	400	≤ 1500	200	≤ 12000	100	
Transmission rate [kbit/s]	Lunghezza [m]																										
≤ 93,75	1200																										
≤ 187,5	1000																										
≤ 500	400																										
≤ 1500	200																										
≤ 12000	100																										
Transmission rate [kbit/s]	Length [m]																										
≤ 93,75	1200																										
≤ 187,5	1000																										
≤ 500	400																										
≤ 1500	200																										
≤ 12000	100																										